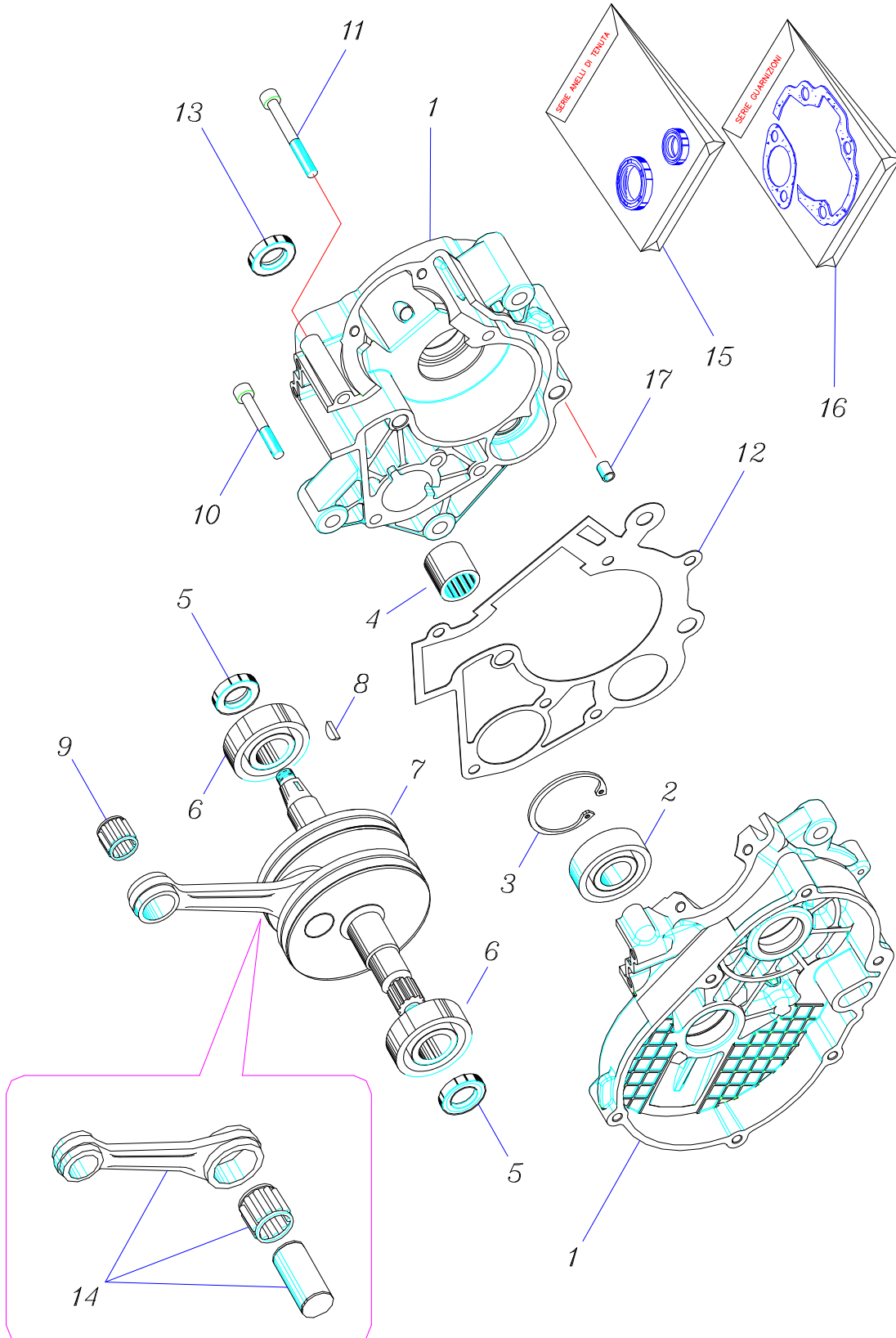


SPARE PARTS

S6/C ENGINE

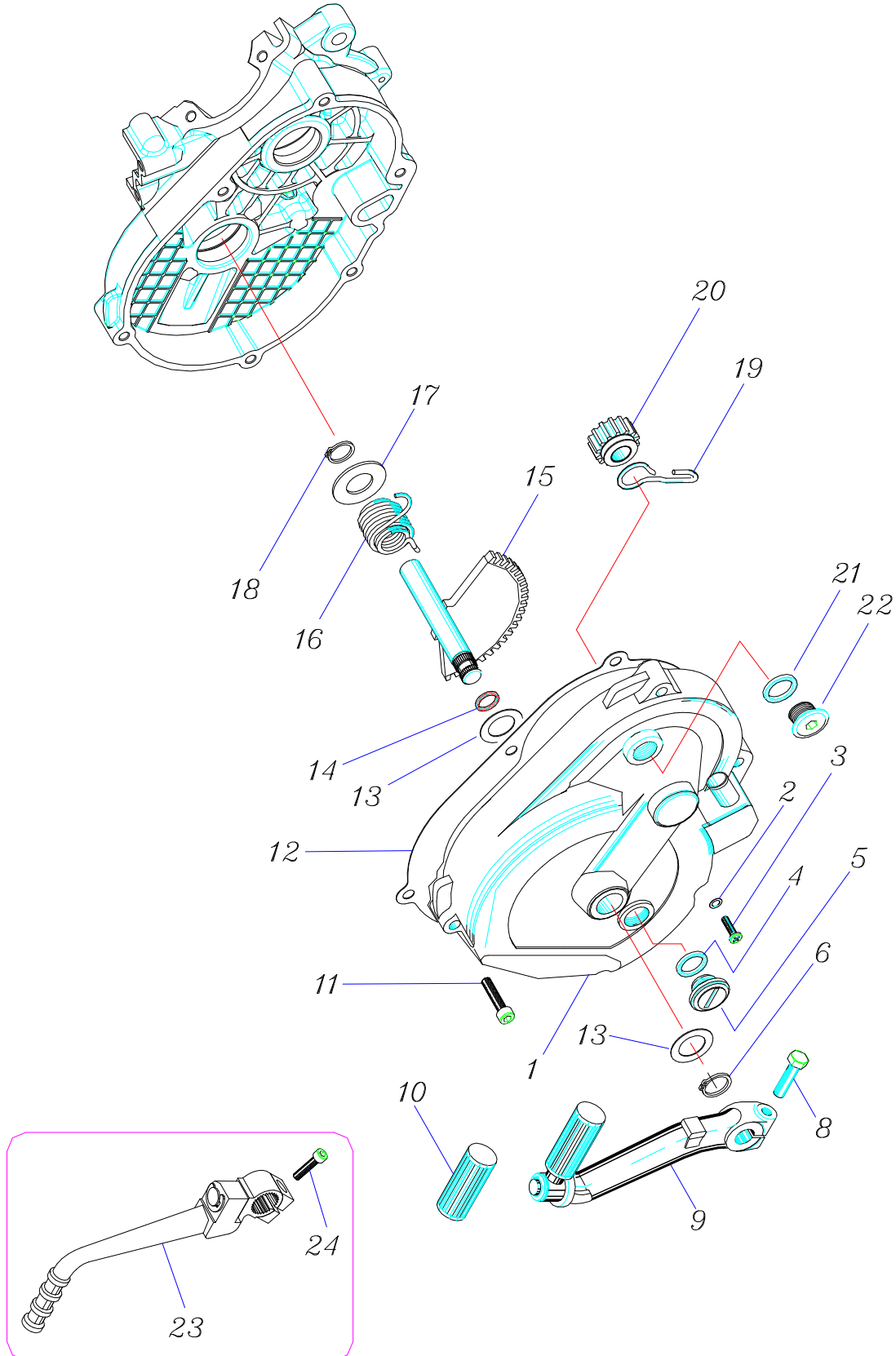
ENGINE BLOCK



ENGINE BLOCK

CODE	DENOMINATION	QTY.	NOTES	TABLE
12-0691	COMPLETE CRANKCASE	1		A 01
12-6067	BEARING 17-35-10	1		A 02
10-5070	SNAP RING FOR HOLE DIAM. 36	1		A 03
10-8512	ROLLER CAGE HK 1712 B	1		A 04
10-5033	OIL SEAL 17-27-6	2		A 05
12-6021	BEARING 17-40-12	2		A 06
10-0189	CRANKSHAFT	1		A 07
12-7025	FLYWHEEL KEY	1		A 08
16-1024	ROLLER CAGE 12-15-15	1		A 09
29-1991	BOLT M6x50	7		A 10
29-1993	BOLT M6x60	1		A 11
16-4297	HALF CRANKCASE GASKET	1		A 12
10-6034	OIL SEAL 17-25-5	1		A 13
11-0041	COMPLETE CONNECTING ROD	1		A 14
	SET OF OIL SEALS	1		A 15
	SET OF GASKETS	1		A 16
26-8127	DOWEL PIN	2		A 17

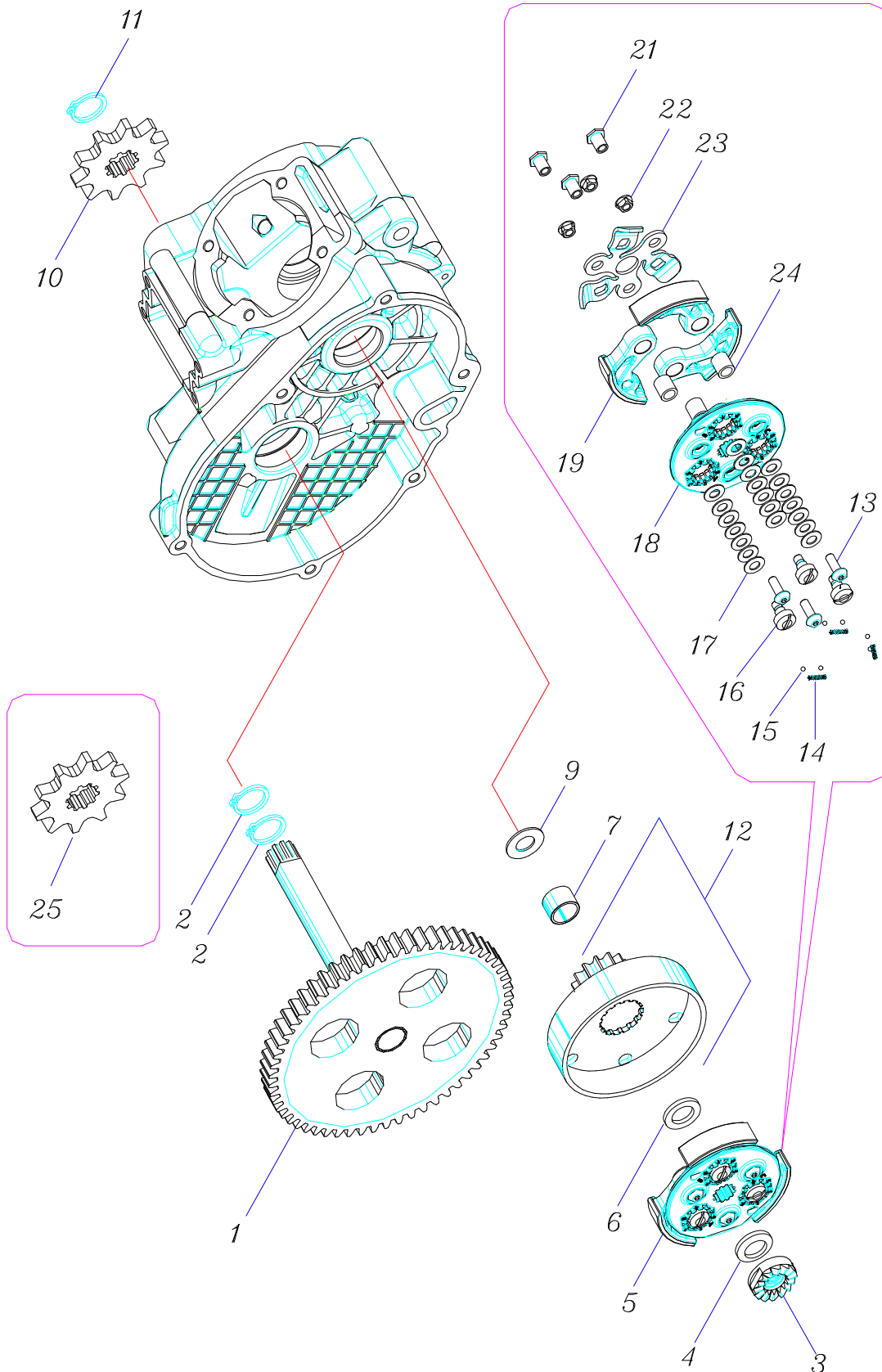
KICK STARTER UNIT AND CLUTCH COVER



KICK STARTER UNIT AND CLUTCH COVER

CODE	DENOMINATION	QTY.	NOTES	TABLE
12-4269	CLUTCH COVER	1		B 01
16-4069	OIL DRAIN PLUG WASHER	1		B 02
29-6001	OIL DRAIN PLUG	1		B 03
16-4026	OIL FILLER CAP GASKET	1		B 04
27-3007	OIL FILLER CAP	1		B 05
10-5001	SNAP RING DIAMETER 14	1		B 06
29-4115	BOLT M7x25 FOR KICK STARTER LEVER ALUMINIUM	1		B 08
19-0029	KICK STARTER LEVER ALUMINIUM	1		B 09
16-3028	RUBBER PAD FOR KICK STARTER LEVER	1		B 10
29-1987	BOLT M6x30	6		B 11
16-4296	CLUTCH COVER GASKET	1		B 12
25-4005	SPACER RING 0.8 mm	2		B 13
10-7024	KICK STARTER SHAFT O-RING	1		B 14
10-0188	KICK STARTER SHAFT	1		B 15
20-1181	KICK STARTER RETURN SPRING	1		B 16
25-4010	SPRING WASHER	1		B 17
10-5029	SNAP RING DIAMETER 15	1		B 18
20-1182	RETURN SPRING FOR SLIDING GEAR	1		B 19
18-1300	SLIDING GEAR	1		B 20
16-4009	CLUTCH ADJUSTING PLUG GASKET	1		B 21
27-3046	CLUTCH ADJUSTING PLUG	1		B 22
19-0052	KICK STARTER LEVER STEEL	1		B 23
29-1985	BOLT M7 x 25 FOR KICK STARTER LEVER STEEL	1		B 24

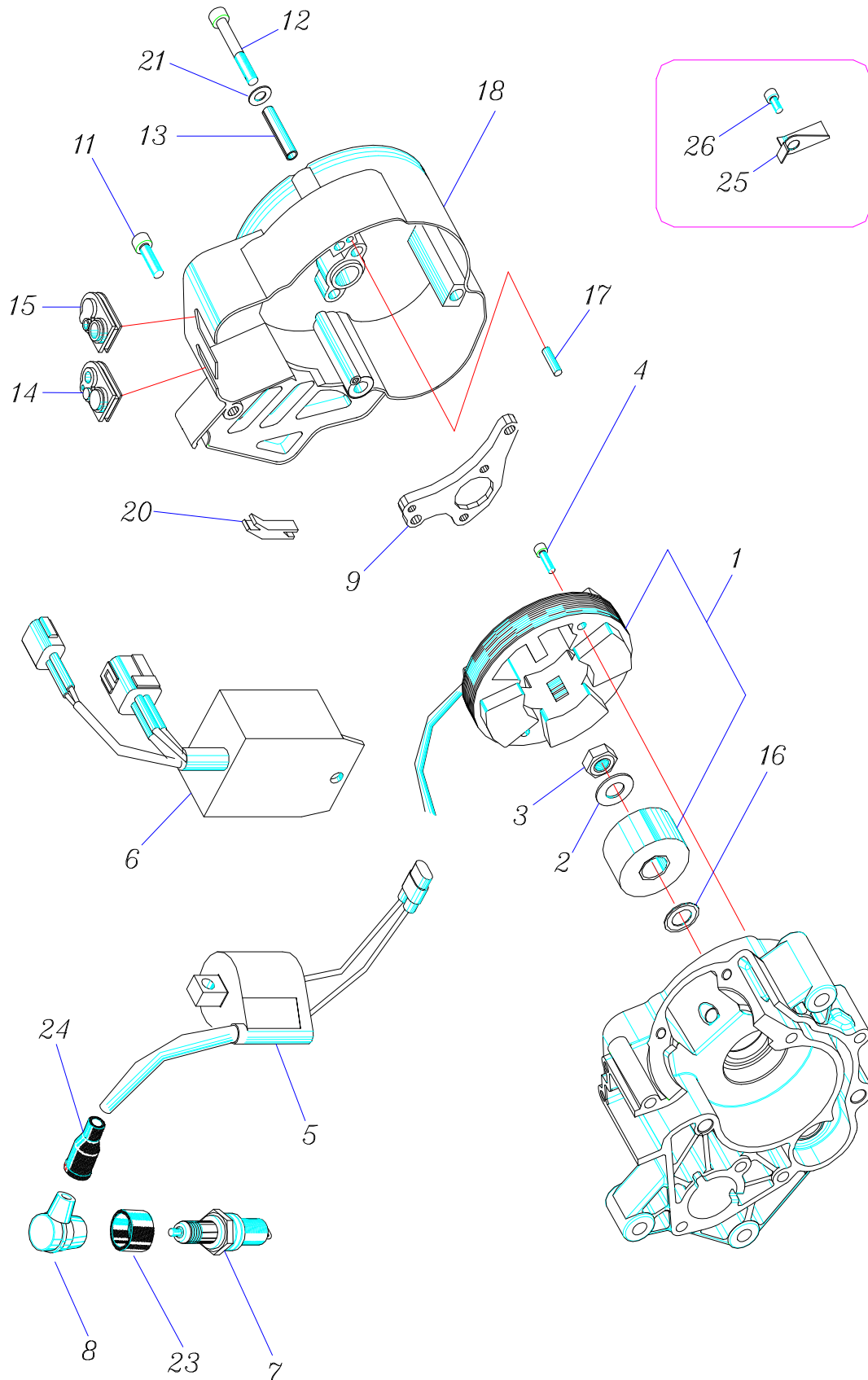
TRANSMISSION AND SPECIAL CLUTCH



TRANSMISSION AND SPECIAL CLUTCH

CODE	DENOMINATION	QTY.	NOTES	TABLE
12-0689	OUTPUT SHAFT	1		C 01
10-5077	SNAP RING DIAMETER 17	2		C 02
13-1035	FRONT CLUTCH NUT	1		C 03
20-1195	BELLEVILLE WASHER	1		C 04
15-0095	SPECIAL CLUTCH	1		C 05
13-6130	SPACER RING 2.5 mm CLUTH BELL	1		C 06
11-5097	DRIVE GEAR BUSHING	1		C 07
26-4005	SPACER RING 0.8 mm	1		C 09
23-2608	CHAIN SPROCKET Z 10	1		C 10
10-5035	SNAP RING DIAMETER 16 mm FOR CHAIN SPROCKET	2		C 11
18-0031	CLUTCH BELL	1		C 12
29-6126	CLUTCH SOCKET SCREW	3		C 13
20-1186	CLUTCH SHOE TENSION ADJUSTING SPRING	3		C 14
26-8241	BALL DIAM. 2,5	6		C 15
29-6127	CLUTCH ADJUSTING SCREW	3		C 16
20-1194	BELLEVILLE WASHER	21		C 17
23-7124	CLUTCH SHOE HOLDER PLATE	1		C 18
20-0092	CLUTCH SHOE	3		C 19
21-4013	RETAINER PAWL	3		C 21
27-7158	SCREW COUPLING	3		C 22
20-1184	FLAT SPRING	1		C 23
11-5102	BUSHING	3		C 24
23-2611	CHAIN SPROCKET Z 11	1		C 25

IGNITION UNIT AND FLYWHEEL COVER

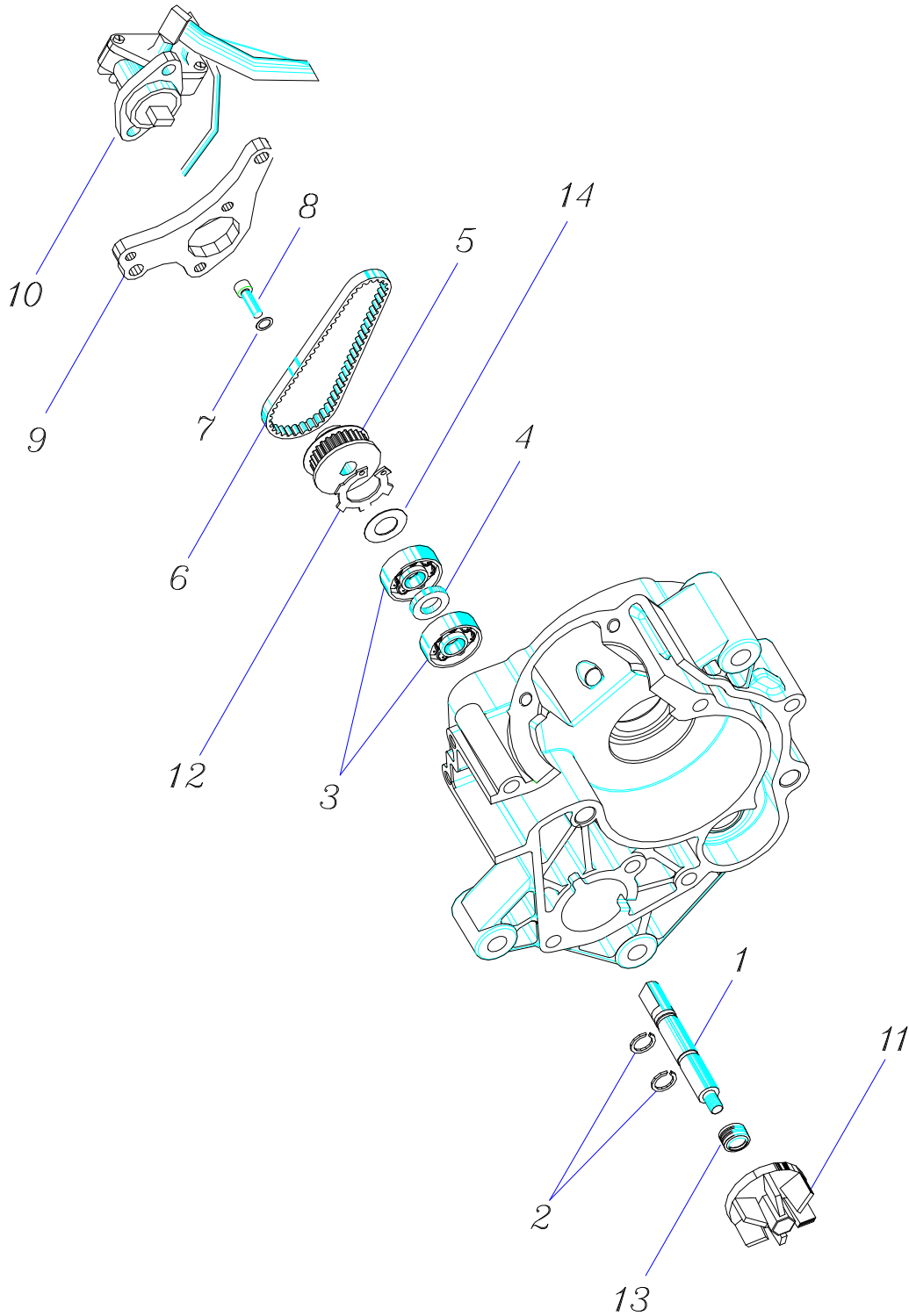


IGNITION UNIT AND FLYWHEEL COVER

CODE	DENOMINATION	QTY.	NOTES	TABLE
20-0159	COMPLETE FLYWHEEL	1		D 01
25-4023	WASHER	1		D 02
13-1027	FLYWHEEL ROTOR NUT	1		D 03
29-1933	CLAMPING SCREW M4X18	2		D 04
14-1077	IGNITION COIL	1		D 05
14-1072	CDI UNIT	1		D 06
12-7348	SPARK PLUG	1		D 07
23-7146	SPARK PLUG CAP	1		D 08
26-8257	BRACKET FLYWHEEL COVER	1		D 09
29-1959	SCREW M5 X 20	1		D 11
29-1986	SCREW M5 X 50	3		D 12
16-7056	ELASTIC DOWEL	2		D 13
16-3075	RUBBER FAIRLEAD	1		D 14
16-3082	RUBBER FAIRLEAD	1		D 15
25-4230	UNDER ROTOR SPACER	1		D 16
25-7134	PIN DIAMETER 4 X 17.8	1		D 17
12-4260	FLYWHEEL COVER	1		D 18
16-3081	RUBBER PAD FOR FLYWHEEL COVER CLOSURE	1		D 20
25-4240	WASHERS	4		D 21
16-3058	SPARK PLUG RUBBER PROTECTION	1		D 23
16-3051	SPARK PLUG WIRE PROTECTION	1		D 24
19-1073 **	PLATE FOR FLYWHEEL COVER CLOUSURE	1		D 25
29-1954 **	SCREW M5 X 10	1		D 26

FOR VERSION WITH SPROCKET Z 11

WATER PUMP AND OIL MIXER PUMP



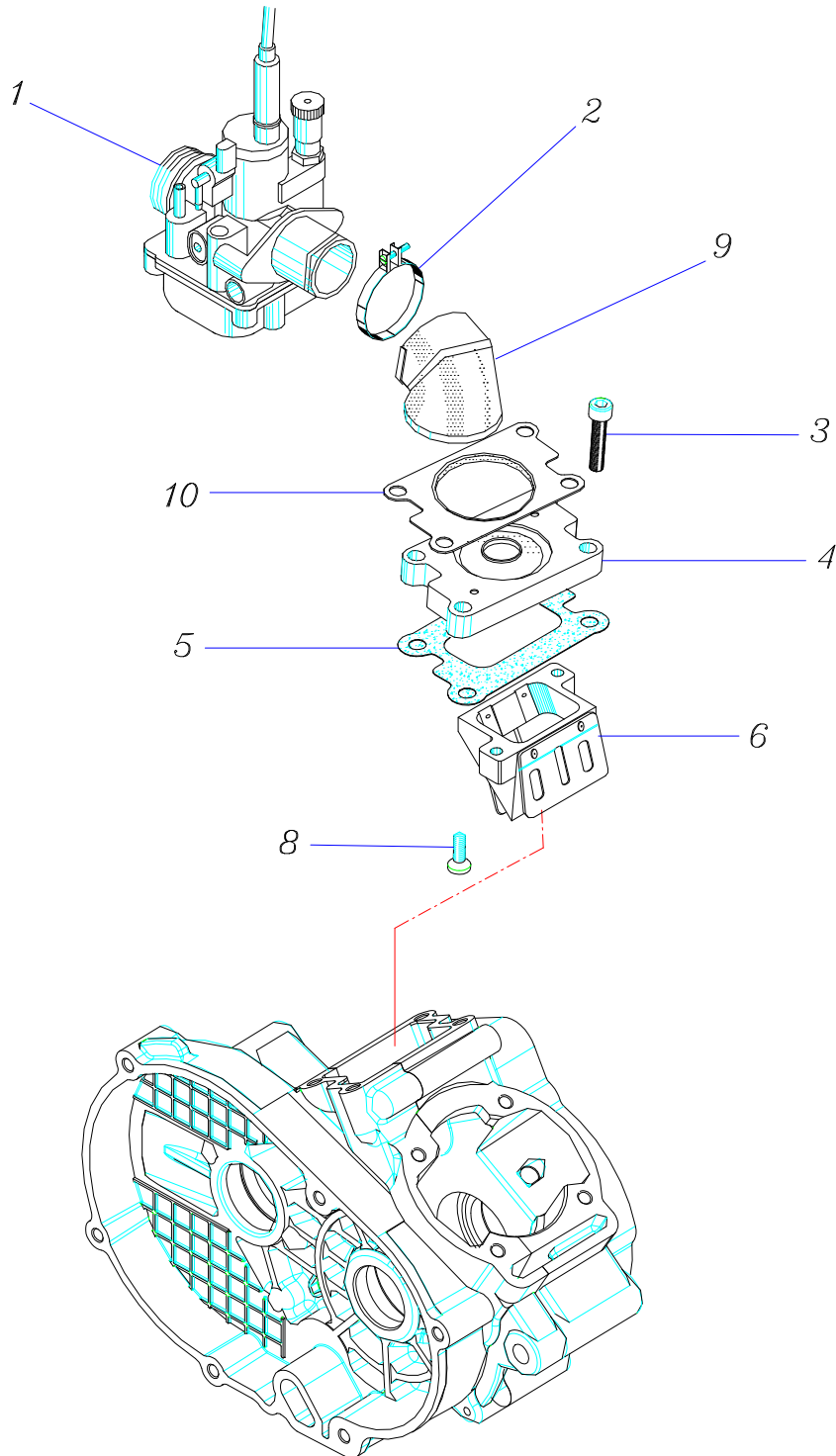
WATER PUMP AND OIL MIXER PUMP

CODE	DENOMINATION	QTY.	NOTES	TABLE
10-1237	WATER PUMP DRIVE SHAFT	1		F 01
10-5061	SNAP RING DIAM. 8 TYPE SW	2		F 02
12-6038	BEARING 8-22-7 2RS	2		F 03
13-6125	SPACER RING	1		F 04
23-0091	DRIVEN PULLEY	1		F 05
12-7335	DRIVE BELT	1		F 06
25-4086 **	WASHER	1		F 07
29-1931 **	BOLT M4X14	1		F 08
26-8238	OIL MIXER PUMP BRACKET	1		F 09
23-0095	OIL MIXER PUMP	1		F 10
16-7031	WATER PUMP ROTOR	1		F 11
13-7006	SPECIAL SNAP RING	1		F 12
10-6079	SEAL RING	1		F 13
25-4227	SPACER RING	1		F 14

**

ONLY FOR VERSION WITHOUT OIL MIXER PUMP

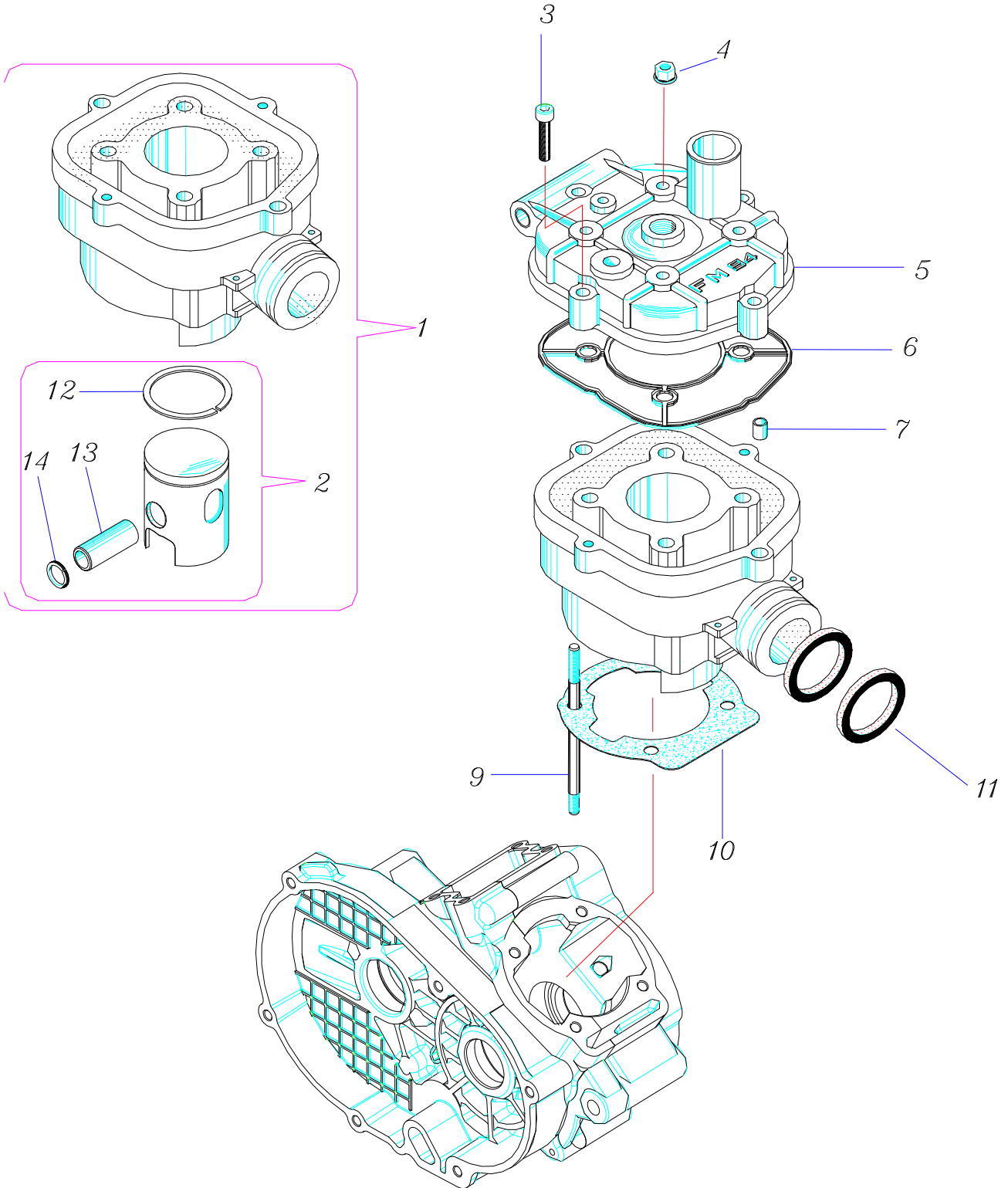
CARBURETOR UNIT



CARBURETOR UNIT

CODE	DENOMINATION	QTY.	NOTES	TABLE
12-0828	CARBURETOR PHBG 19 B	1		G 01
15-1015	CLAMP APA SM9CW1 32	1		G 02
29-1986	BOLT M6X25	4		G 03
11-8027	CARBURETOR MANIFOLD BASE	1		G 04
16-4298	CARBURETOR MANIFOLD BASE GASKET	1		G 05
29-0541	COMPLETE REED VALVE	1		G 06
29-6051	REED VALVE CLAMPING SCREW	2		G 08
20-6089	CARBURETOR MANIFOLD	1		G 09
23-7140	CARBURATOR MANIFOLD RETAINER PLATE	1		G 10

CYLINDER - PISTON - CYLINDER HEAD



CYLINDER - PISTON - CYLINDER HEAD

CODE	DENOMINATION	QTY.	NOTES	TABLE
77-3968	COMPLETE CYLINDER AND PISTON KIT	1		H 01
23-0183	COMPLETE PISTON	1		H 02
29-1987	HEAD BOLT M6X30	4		H 03
13-1030	HEAD NUT	4		H 04
27-5094	CYLINDER HEAD	1		H 05
10-7018	CYLINDER HEAD O-RING GASKET	1		H 06
16-7008	DOWEL PIN	2		H 07
23-5055	STUD BOLT	4		H 09
16-4295	CYLINDER BASE GASKET 0.5MM	1		H 10
16-4313	CYLINDER BASE GASKET 0.3 MM	1		H 10
16-4314	CYLINDER BASE GASKET 0.7 MM	1		H 10
10-7065	EXHAUST PORT O-RING GASKET	2		H 11
26-1056	PISTON RING	1		H 12
26-8107	PISTON PIN	1		H 13
10-4001	PISTON PIN CIRCLIP	2		H 14